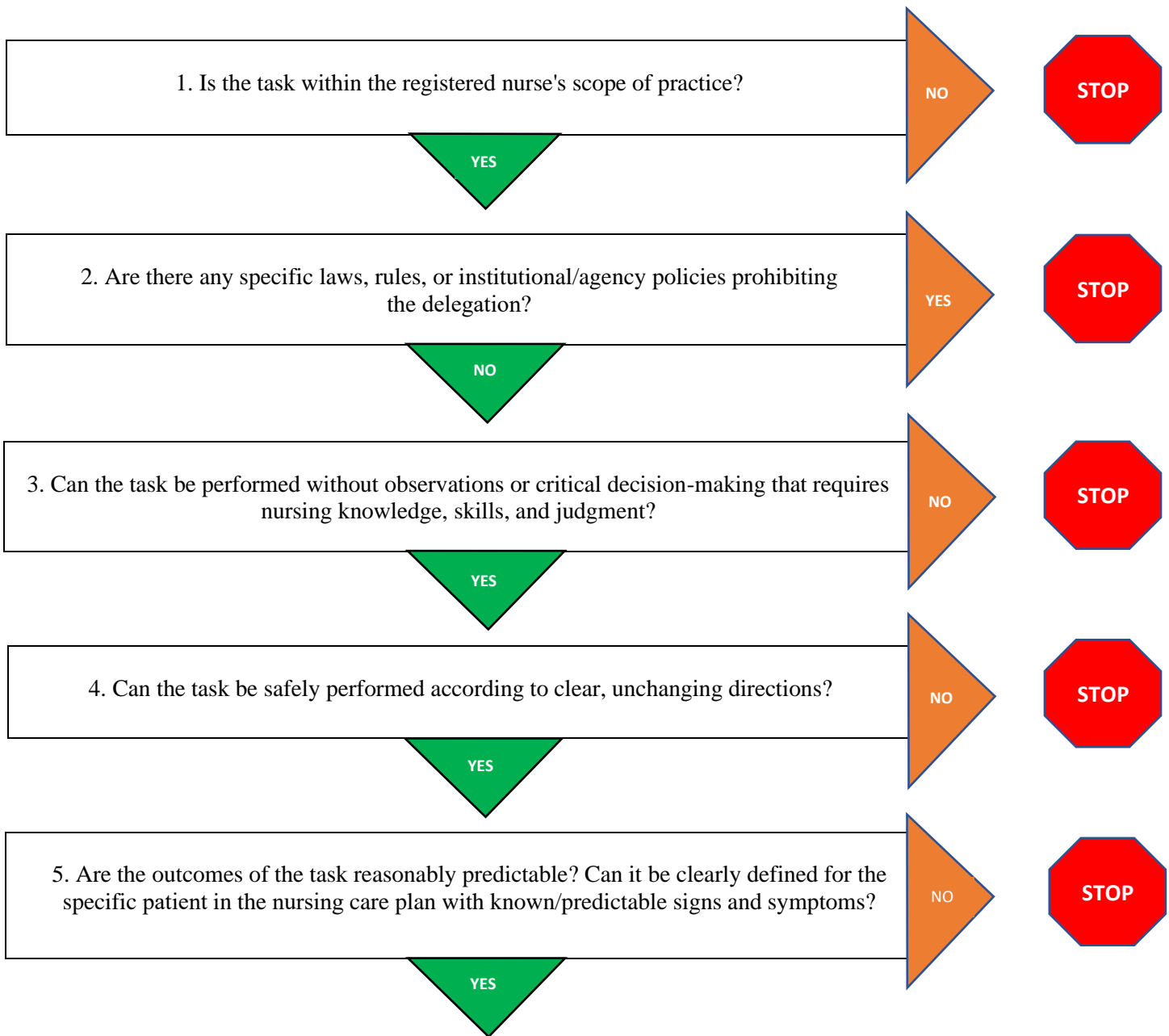


DECISION TREE FOR RN DELEGATION TO UAP

This decision tree is to assist Registered Nurses in determining if it is appropriate to delegate a specific nursing activity and task in a particular setting.

It is assumed that a nurse has assessed the patient and situation completely and created an individual nursing care plan in order to answer the questions in this decision tree.



Task itself is generally appropriate for the registered nurse to delegate. Follow Maine BON Rules, Chapter 6 Delegation of Nursing Activities and Tasks to Unlicensed Assistive Personnel (UAP) by Registered Professional Nurses (RN)